

HS24.carbon track

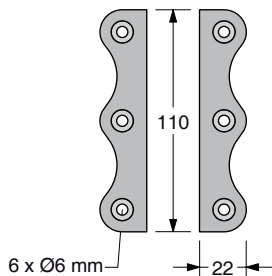
For racing boats
from 50 to 70 ft

Mod. HS24.03 END FITTING

Made in aluminium; should be attached to the mast with 2 X 6 mm screws.

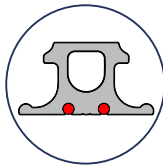
Mod. HS24.05 SIDE PLATES

Fixing can be improved, on most loaded zones (mast head and reefing positions), with 2 aluminium side plates screwed to the mast.



Mod. HS24.02 TRACK JOINT

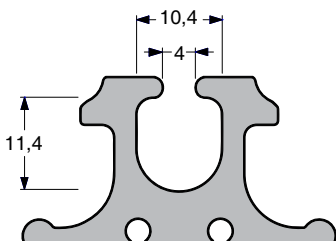
Connection of different sections will be done with 2 s.steel pins.



Mod. HS24.04 LOADER

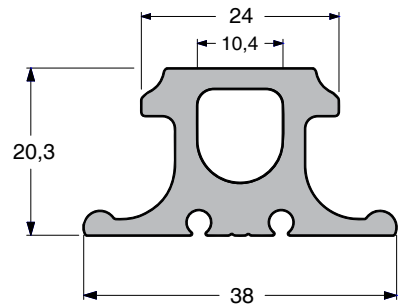
It allows the cars to be loaded and unloaded easily; the loader includes a stop pin which provides 2 positions: open and closed.
L = 900 mm Weight = 0.80 kg

Track with bolt rope groove is available on request.



GLUED TRACKS

Wide base profiles for secure strong gluing, particularly suitable for carbon masts. Use for gluing "SP System Spabond 345" or similar.



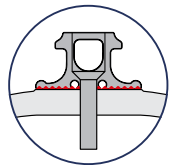
Mod. HS24.340

TRACK FOR CARBON FIBER MAST

Aluminium profile hard black anodized and teflon coated. Weight = 0.817 kg/m
It's available in 3 m sections.

FIXING

The track will be glued to the mast (SP SYSTEM - SPABOND 345). For an easier gluing each track is fixed with 4 positioning screws.



Xema 50 - Privilege