

bamar

2023

BFBM^(A80)



BFBM^(A80)

hydraulic or electric motorization for furling booms

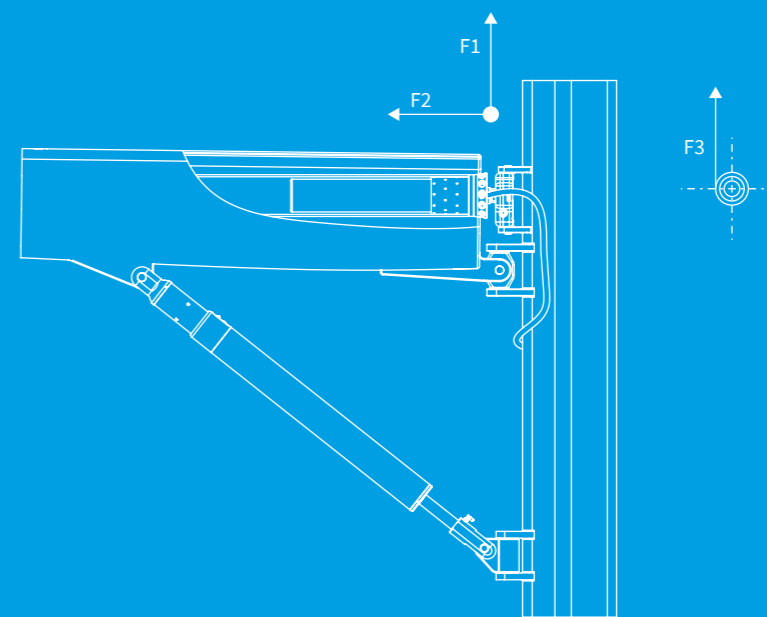
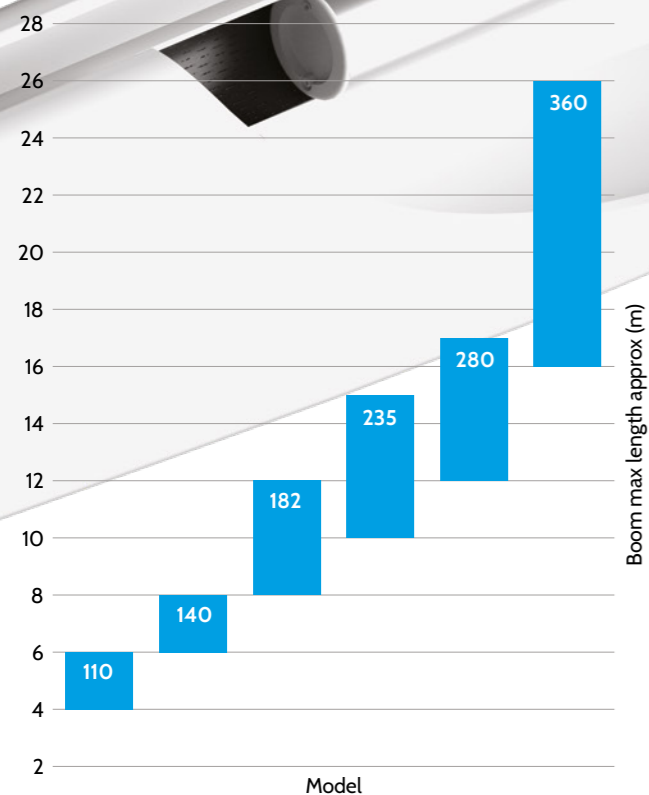
Electric motorizations for furling booms available for sailing yachts with indicative boom length from 5 to 25 metres. The system is made up by a reduction gear and an electric motor with its brake (to lock the device when reefing), integrated and protected inside a cylindrical structure designed to be housed inside the mainsail furling mandrel. Should the boom-maker supply a manual locking device (part of the boom construction), then the electro-magnetic brake is not required. The motorization external body is in polished stainless steel, and is supplied with slots where the mainsail tack is to be tied on.

The standard motorization (A) may be equipped with either a simple boom toggle (B), or alternatively, with the special boom toggle (C) that integrates the manual emergency clutch.

N.B.: both toggles are optional and are to be requested when placing the order. Upon demand, we may supply the drilling template (D) for the mandrel.

Being compact, light in weight, easy to install and thanks to its position mast-side of the boom, our electric motorization represents a unique solution in its field. Moreover, among the systems on the market, this Bamar furler is the one that allows for the minimum distance between aft-face of the mast and sail tack. This makes the sail opening and closing easier.

Sizes 140, 182, 235, 280 and 360 may also be hydraulically motorized.



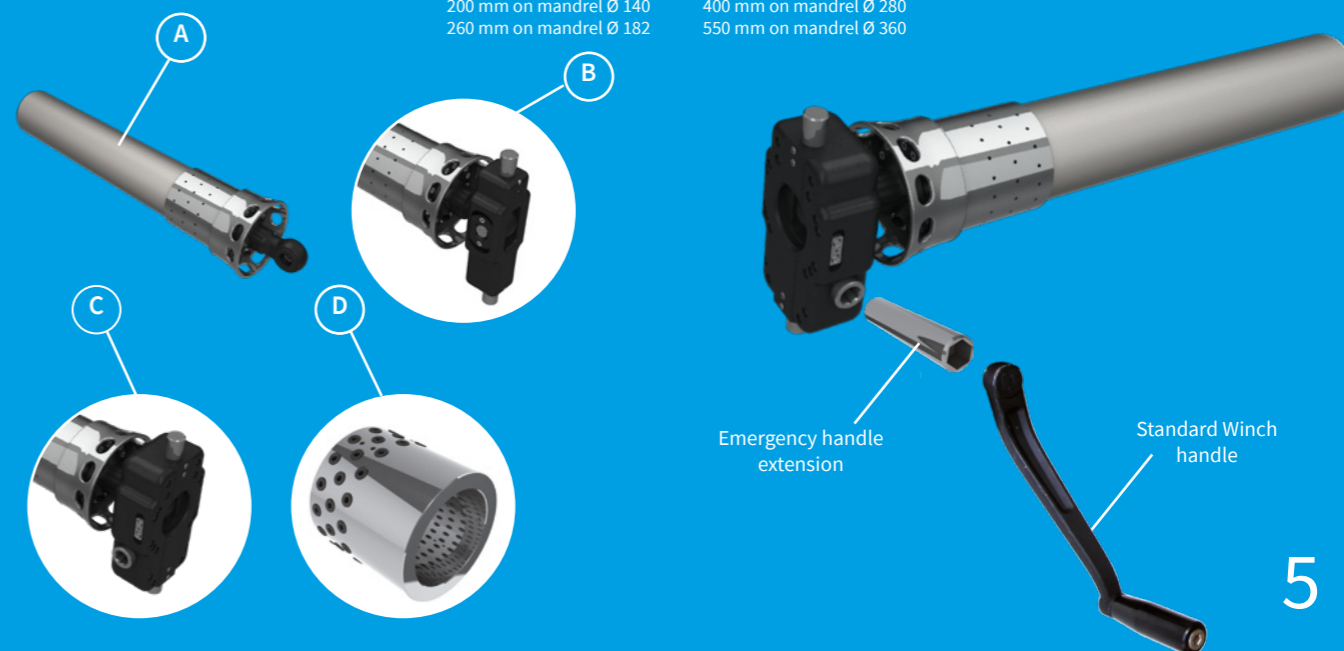
Mandrel External Ø mm	110	140	182	235	280	360	
Boom max length (indicative not binding) m	6	8	12	15	18	22 - 25	
F1 Vertical Pull max WL* t	1,5	2,5	6	11	15 - 20	30	
F2 Horizontal Pull max WL* t	1	2	4	7	10	20	
F3 Reefed Sail Vertical max WL** t	1,5	2,5	6	11	15 - 20	30	
Simple boom toggle (B) weight kg	2,26	2,52	2,94	-	-	-	
Emergency boom toggle (C) weight kg	4,57	5,31	6,05	22,18	44,74	74,26	
Electric	Volt	12 - 24	12 - 24	24 - 220 / 400	24 - 220 / 400	220 / 400	220 / 400
	Motor Power W	200	400	1500 - 2000	2000 - 2500	3000 - 4000	4000 - 5500
	Speed Max rpm	15	15	15	19	TBC	TBC
	Weight kg	18	31	43	135	230	390
Hydraulic	Int. pressure drop Bar	-	140	140	-	70 / 140	-
	Oil flow L/min	-	12,5	25	-	45 / 20	-
	Furler speed rpm	-	13,5	18	-	22 / 5,5	-
	Weight kg	-	27	55	-	195	-

*with sail fully open

** calculated on an intermediate Ø

160 mm on mandrel Ø 110
200 mm on mandrel Ø 140
260 mm on mandrel Ø 182

320 mm on mandrel Ø 235
400 mm on mandrel Ø 280
550 mm on mandrel Ø 360



Distributed by: DeckHardware

bamar[®]

Via F.lli Lumière 45 Phone: +39 0543 463311 info@bamar.it
47122 Forlì (FC), Italy Fax: +39 0543 783319 bamar.it

Bamar is a Soluzioni Meccaniche brand

